

# IT 101 for FSILGs

Scott Klemm, Executive Director  
FSILG Cooperative, Inc. (FCI)

Thursday, 31 January 2008

# FCI and IT Infrastructure

- Provide Installation, Maintenance, Upgrade via external vendors
- Help with IRDF Funding

# Installation, Maintenance, Upgrade

- Multiple vendors available
- Full, Partial, and repair of Member Installations
- Fire and Electrical code requirements
- Coordination with IS&T

# IRDF Funding Mechanism

- Computer Clusters
- Freshman Study areas
- IRDF Community Network Upgrade

# Voice Lines - required

- House Phones – Necessary for contact, Cell Phones not the same as house line
- Alarm Lines – 2 required min
- Elevator Lines – 1 required min
- VOIP - opportunities developing

# Television

- Cable -
- Satellite TV –
- IPTV project – future, much greater bandwidth needed

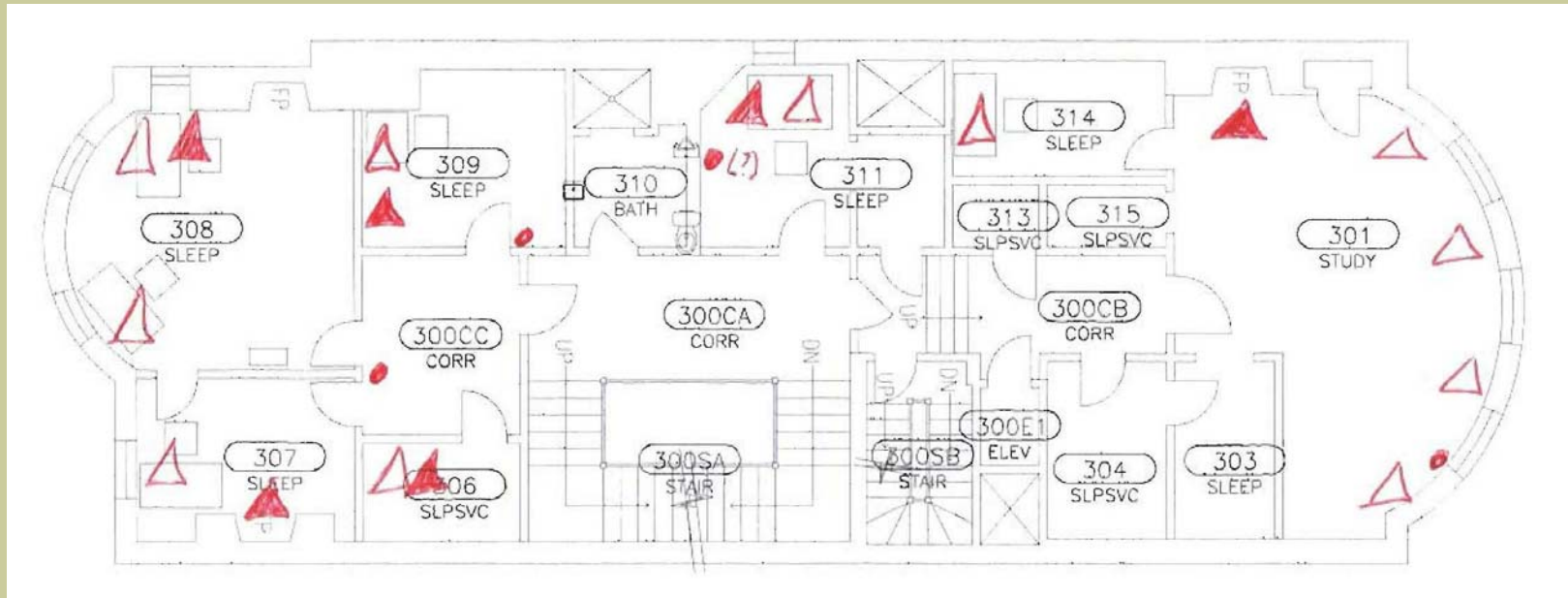
# Best Practices

- ILG quick guide available online
- No local DHCP
- Gigabit level equipment

# Dealing with Network Contractors

- What to prepare
- Map existing network topology and equipment
- Map existing coax
- Map existing voice circuits
- Be clear about what your getting, understand time frames
- Move items out of the way, ie empty storage
- Access to all rooms in the house - have the keys

# Simple Network Map



# IRDF Community Network Upgrade

- All FSILGs can participate
- Participating FSILGs will be brought up to a base specification developed by AILG-IT and IS&T
- MIT IS&T providing technical & project oversight
- IRDF will fund 100% of the Base Specification work
- Opportunity for additional systems to be installed

# Process and Timeline

- A simple network map created by 2/28
- List of above spec work desired by 2/28
- 2/28 – overview informational meeting
- Post 2/28 Phase 1 Vendor will visit and develop detailed plans for RFP
- Early Spring – RFP will be put out to bid
- Summer 08-09 installations

# Resources and contacts

- ILG net help: [ilg-net-help@mit.edu](mailto:ilg-net-help@mit.edu) is primary contact mechanism for ***ILG Net Contacts*** to report problems and request help
- IRDF grant funds are available for internal network upgrades. Talk to the fsilg-coop in W20 or visit <http://fsilg.coop>
- IS&T web pages: <http://web.mit.edu/ist>
- Residential Computing: FSILG pages:
  - <http://web.mit.edu/rescomp/www/ilg/>
- ILG Quick Guide:
  - <http://web.mit.edu/rescomp/www/ilg/QG/ILG-QG.pdf>